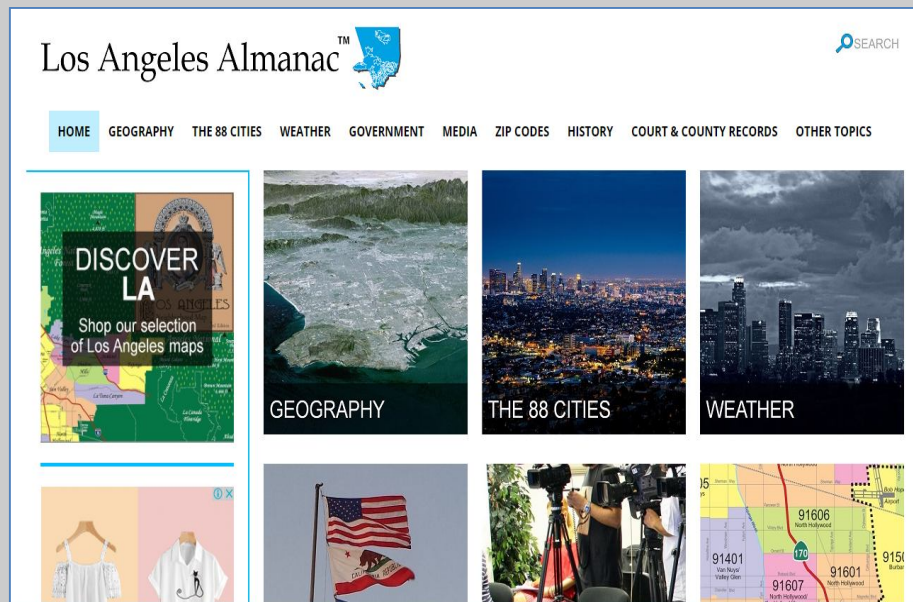


Home Page



Logo



URL

<http://www.laalmanac.com/index.php>

Subject

Almanacs – Los Angeles

Accessibility

Free

Language

English

Publisher

Given Place Media

Brief History

Los Angeles Almanac was launched online in 1998 as LosAngelesAlmanac.com (renamed LAAlmanac.com in 2005).

Scope and Coverage

The Los Angeles Almanac is a unique online reference work focusing strictly on Los Angeles County, the City of Los Angeles and the county's many other communities.

We lay claim to not only being the first comprehensive almanac for Los Angeles and Los Angeles County, but also the first online almanac focusing exclusively on any major metropolitan area in the world. The Almanac is packed with more than 600 pages of information culled from hundreds of public and private sources, most of which are referenced with hyperlinks.

It covers.....

- Geography
- The 88 Cities
- Weather
- Government
- Media
- Zip Codes
- History
- Country & Country Records
- Other Topic

Kind of Information

As stated in in the scope & coverage area, topic like geography, weather etc. comes with several sub –topics which manages to give information about LOS Angeles. After selecting a particular topic, visitors are enriched with various fields. Such as...

- **Temperature**
- **Cloudiness**
- **Precipitation (Rainfall)**
- **Snow**
- **Humidity**
- **Sunrise/Sunset Times**
- **Santa Anas**

Here, the topic **Weather** holds information like temperature, humidity etc. After selecting Temperature from the list, one can see that there are some micro categories that hold core information. Such as.....

- Temperatures at the L.A. Civic Center - Monthly & Annual Averages, Normals& Records
- Monthly Climate Summaries (**Temperature**-Rainfall-Snow) - Select Los Angeles County Locations
- Temperature Records, Downtown Los Angeles & Los Angeles Intl. Airport
- Record High/Low Temperatures by Day, Downtown Los Angeles
- The Warming of Los Angeles
- Average Temperatures by Day of the Year, Downtown Los Angeles

Apart from that, the **Other Topic** gives opportunity to know about All Almanac Topic, Animal Shelters, and Crime & Justice etc. In this portion, **All Almanac Topic** gives information about

- Agriculture
- Area Codes & Zip Codes
- Arts & Museums
- Buildings & Bridges
- Cities & Communities
- Court & Vital Records
- Crime & Justice
- Earthquakes
- Economy & Business
- Education
- Employment & Income
- Energy
- Environment & Animals
- Geography
- Government
- Health
- History
- Immigration & Migration
- Media
- Military
- Mysterious L.A.
- Nobel Prizes
- Parks & Beaches
- People
- Population
- Religion
- Rescue
- Social Welfare
- Sports
- Transportation
- Vital Statistics
- Voters & Elections
- Weather & Climate

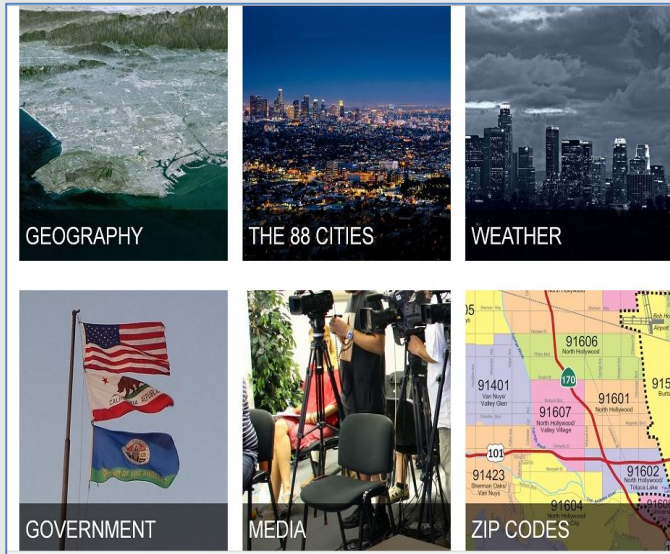
Special Features

- ❖ This almanac is referenced extensively across a wide variety of websites and online publications. Among the many sites that have referenced:
 - Ability Magazine
 - AirTalk (KPCC)
 - Arroyo Seco Foundation
 - Ballotpedia

- BusinessInsider.com
- California Historical Society
- California State Genealogy Alliance etc.

❖ Sitemap is provided to help users.

Arrangement Pattern Information is arranged category and sub-category wise.



Remarks The Los Angeles Almanac is a unique online reference work focusing strictly on Los Angeles County, the City of Los Angeles and the county's many other communities. This almanac continuously adds to improve this website with new pages, illustrations and maps.

Date of Access 18th July, 2017