

## Home Page

The screenshot shows the website's header with the title 'North Lincolnshire Museum Service Image Archive' and a search bar. A navigation menu on the left lists: Home, About us/What's new, Search the image archive, Popular collections, Sound Archives, How to obtain prints, Donating Images, Links, and Contact us. The main content area features a teal banner with the text 'Images of North Lincolnshire's people, places & events' above a black and white photograph of a band. To the right, a 'Latest news!' section contains text about the website's redesign and a 'Picture of the month' section featuring the same band photo with a caption: 'Picture of the month: Scunthorpe Salvation Army band outside the rectory - St Lawrence's vicarage, c1900s.' The footer includes logos for Arts Council England, Twitter, Facebook, and Humber Museums Partnership, along with the North Lincolnshire Council logo and website URL.

## Logo



## URL

<http://www.northlincsmuseumimagearchive.org.uk/>

## Subject

United Kingdom – Photograph collections – Archives

## Accessibility

Free

## Language

English

## Publisher

Arts Council England (ACE)

## Brief History

North Lincolnshire Museum Service Image Archive established in 2000.

### ***Scope and Coverage***

North Lincolnshire Image Archive covers Images of North Lincolnshire's people, places & events.

### ***Kind of Information***

The main purpose to build this archive was to digitise the Museum's photographic collections and make them available to the public. This website allows people from all over the world to see these images and promotes the long term care of the collections.

The image archive is a service for anyone interested in historic photographs of North Lincolnshire. It is available at North Lincolnshire Museum, Normanby Hall, and North Lincolnshire Central Library in Scunthorpe.

Between them, the council's museums service and the library service have over 25,000 photographs. Of these, more than 8,000 have already been entered into the computerized image archive, with new photographs being added continually.

Material ranges from views of the largest towns to the smallest villages, as well as covering a variety of themes such as agriculture, industry, leisure, religion and sport.

### ***Special Features***

- ❖ **Accessibility:** One of their key priorities is to ensure that customers have access to their collections, via personal visits to their buildings, or through virtual access through the website.
- ❖ **Searching the image archive:** To carry out a simple search type the search term into the search box at the top of each page and click on Go. To carry out a more refined search click on a letter in the pad below then select a keyword from the drop down list. To search on multiple terms click on the AND/OR button after selecting each keyword

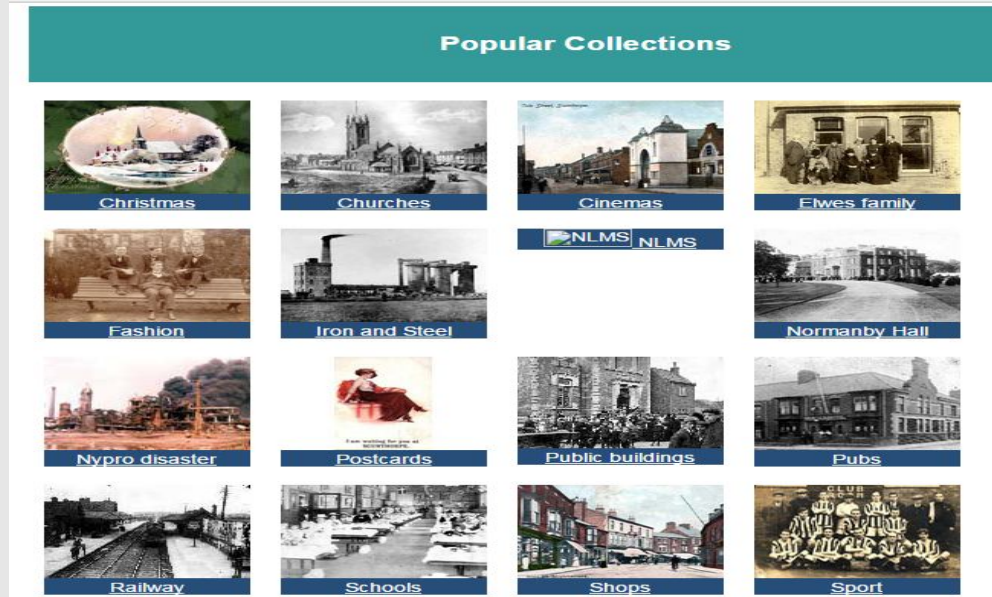


The image shows a search interface with a grid of buttons for letters A through Z and an 'AND' button. Below the grid is a dropdown menu, a search input field, and 'Clear' and 'Search' buttons.

- ❖ **Buying Photographic Prints:** Prints can be ordered by adding images to a 'shopping basket'. When users find an image which they would like to buy, choose the size according to the requirements from the drop down box and click 'Add to basket'.

**Arrangement Pattern** Popular collections are arranged categorically.

As for example, some of the categories are –



**Remarks** The archive provides a comprehensive visual record of the history of North Lincolnshire from the middle of the nineteenth century right up to the present day, and everyone is welcome to use it.

**Comparable Tools**

- The British Museum Images ( <https://www.bmimages.com/index.asp>)
- British Library Images Online ( [https://imagesonline.bl.uk/?service=page&action=show\\_page&name=about-page&language=en](https://imagesonline.bl.uk/?service=page&action=show_page&name=about-page&language=en))

**Date of Access** June 06, 2017