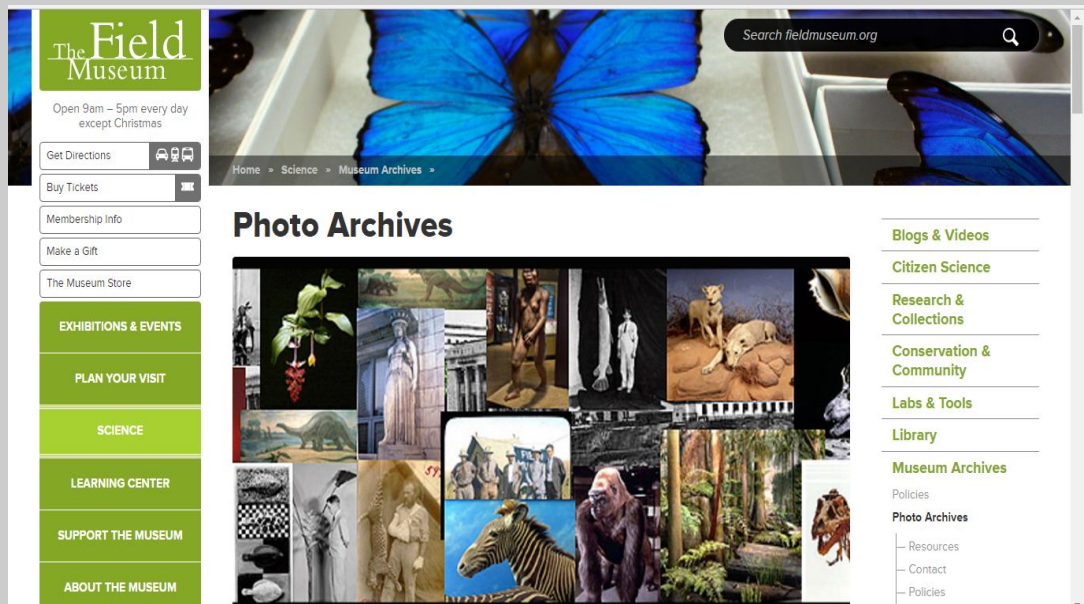


Home Page



Logo



URL

<https://www.fieldmuseum.org/science/research/area/photo-archives>

Subject

Photograph collections - Archives

Accessibility

Free

Language

Multilingual

Publisher

The Field Museum

Brief History

The Field Museum was primarily an outgrowth of the World's Columbian Exposition held in Chicago in 1893.

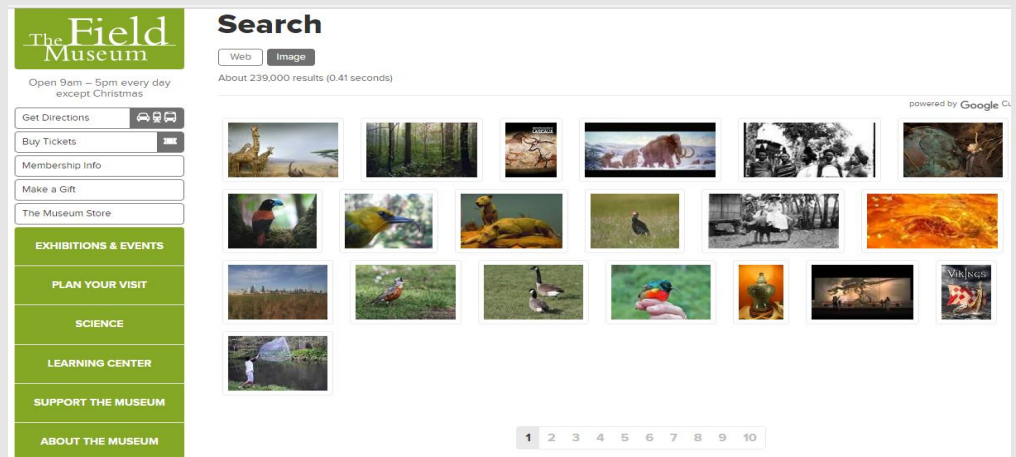
**Scope and Coverage**

The Library Photo Archives collection dates back to the World's Columbian Exposition of 1893.

**Kind of Information**

It comprises over 300,000 images in the areas of Anthropology, Botany, Geology, and Zoology. The collection also documents the history and architecture of the Museum, its exhibitions, staff and scientific expeditions. In 2008 two collections from the Photo Archives became available via the Illinois Digital Archives (IDA): The World's Columbian Exposition of 1893 and Urban Landscapes of Illinois. In April 2009, the Photo Archives became part of the Flickr Commons

As for example, Images in The Field Museum can be seen as below –



It provides a general gallery of photo archives where visitors can see the photos one by one.

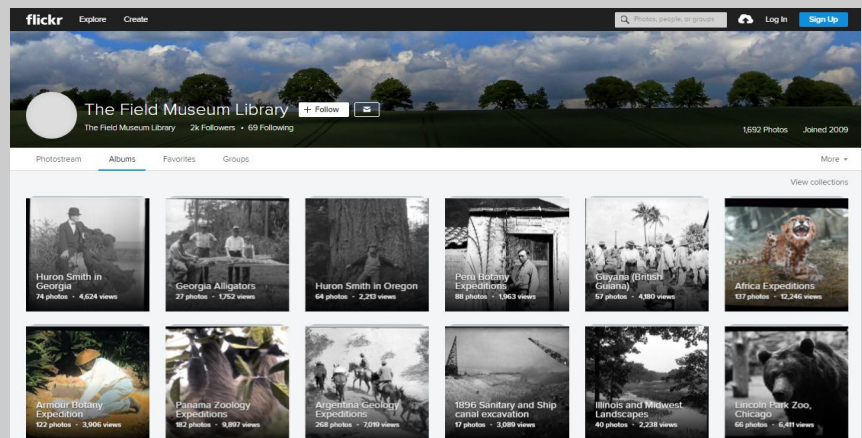


## Special Features

- ❖ Users can search photos by simple search bar. They need to give any keyword in the search box to search the photos.



- ❖ The Field Museum is also attached with Flickr where visitors can find all the images which are categorically arranged.



URL: [https://www.flickr.com/photos/field\\_museum\\_library/sets](https://www.flickr.com/photos/field_museum_library/sets)

## Arrangement Pattern

All the collections are arranged alphabetically.

### PHOTO ARCHIVES COLLECTIONS



**Photo Archives - Africa Collection**

The Field Museum contains one of the finest collections of Cameroon artifacts from the West African grassfields. In the 1920's, Jan Kleykamp, representing the J. F. G. Umlauff Company in Hamburg, sold a collection of artifacts to the Field Museum. The purchase included 332 ethnological photographs taken in 1912 attributed to a man named Schroeder. The Umlauff collection of images illustrate the use and social context of the artifacts.

[LEARN MORE →](#)



**Photo Archives - Anthropology Collection**

Javanese masks from the Anthropology Department's collections. The Photo Archives has an extensive collection of anthropological images from the past and present.

[LEARN MORE →](#)



**Photo Archives - Botany Collection**

Diorama of the Illinois Woodland with plant and flower reproductions by Field Museum staff Emil Sella and Milton Copulos. Background painting by FM staff artist Arthur Rueckert. Originally installed in the Hall of Plant Life in 1939. Image above: *Illinois Woodland diorama photo made in 1985 by Ron Testa, B83204c.*

[LEARN MORE →](#)

**Remarks**

The library at the Field Museum was organized in 1893 for the museum's scientific staff, visiting researchers, students, and members of the general public as a resource for research, exhibition development and educational programs.

The Field Museum has partnered with Getty Images and several sets of images are now available through Getty Images. We will be working over the coming years to place more images with Getty, but cannot promise when particular images will be placed with Getty. Getty Images url: <http://www.gettyimages.com/editorialimages>. Search "field museum library" to view items from the collection.

**Comparable Tools**

- Digital Collections at CALTECH : The Image Archive ( <http://archives-dc.library.caltech.edu/>)
- Frick Art Reference Library Photoarchive ( <http://www.frick.org/research/photoarchive>)
- Center for Art and Archeology of Virtual Museum of Images and Sounds ( [http://vmis.in/ArchiveCategories/collection\\_by\\_category/215](http://vmis.in/ArchiveCategories/collection_by_category/215))

**Date of Access**

April 25, 2017